

WOODBURY
HIGH SCHOOL
HISTORY

HISTORY OF WOODBURY HIGH SCHOOL 1917-1957

Woodbury Borough and
Woodbury Township,
Bedford County

Appendix

Woodbury,
Pennsylvania
March, 1979

HISTORY OF WOODBURY HIGH SCHOOL

Contents

Recognitions

High School History

Quote: County Superintendent's Report

Pictures Speak:

First Class to Graduate, 1917

High School Students Who Last Attended
the Borough Building

First Graduates From the Consolidated School

Last Class of Graduates, 1957

High School Students of 1922-23

Pupils and Students of 1924-25

The First School Busses

Extract From the Board Minutes of 1879

High School and School-Community Activities

Athletics at Woodbury High

Alma Mater

Addenda

Teachers of Woodbury High School

Woodbury High School Alumni

School Directors, 1915-1957

PURPOSE

Our purpose in assembling the facts in this booklet has been to create a near accurate account of the origin and growth of the Woodbury High School.

It will deal with the educational structure that contributed to the Institution as it developed through its expanding phases until the final merger with the Northern Bedford County High School.

An accurate listing of classes, graduates, faculty and principals is compiled which, hopefully, will be instrumental in keeping alive the memories of our happy school-day associations.

If we are successful in accomplishing our aim, we shall be immensely gratified.

The Committee,
Howard Keiper, Ida Mae Baker,
Viola Stonerook, Sara Sell,
Jesse Imler, Cyrus Over,
Anna Snavelly

WOODBURY HIGH SCHOOL BUILDINGS



Erected 1869

Housed high school grades from 1915-1929.

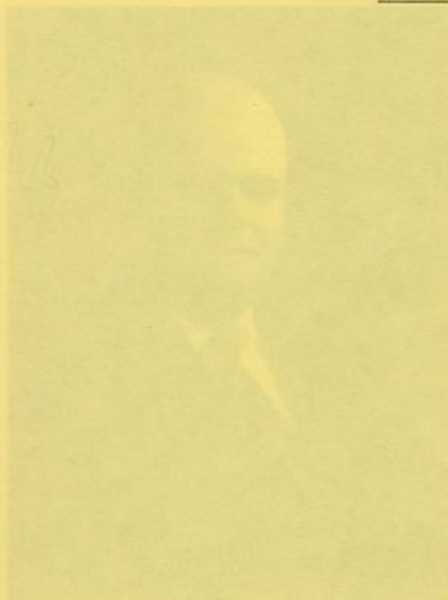


Erected 1929

Housed the high school from 1930-1957.

RECOGNITIONS

HISTORY



Organizer of the
high school.

Served as teacher
and acting principal
1913-15.

Claude K. Snider

RECOGNITIONS

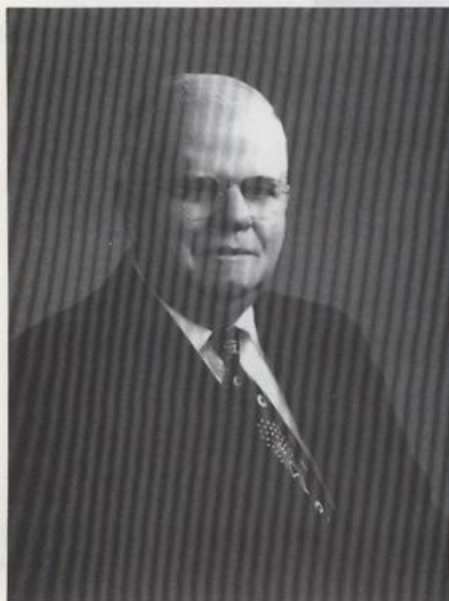
High School History

Quote: by County Superintendent

...to organizing the first high school at Woodbury, ... 1900. Graduating in the Spring of 1912, ... and Woodbury Borough, where he served ... as acting school principal.

A review of New Enterprise, Dr. Snider left the field of education to become a student at the American School of Osteopathy in Missouri. He returned to the State to become the first osteopathic physician in this section of the State.

RECOGNITIONS



Organizer of the
high school.

Served as teacher
and acting principal
1915-16.

Claude K. Snider

CLAUDE K. SNIDER, active in organizing the first high school at Woodbury, registered at Juniata Academy in 1908. Graduating in the Spring of 1912, he taught school in Taylor Township and Woodbury Borough, where he served the latter as grade school principal.

A native of New Enterprise, Dr. Snider left the field of education to become a student at the American School of Osteopathy in Missouri. He returned to the Cove to become the first osteopathic physician in this section of the state.



Teacher-Principal

1916-17

Blair B. Bechtel

BLAIR B. BECHTEL was the first principal of Woodbury High School.

A native of Southern Cove, his educational background began with attendance at the Bull Run School near New Enterprise. He enrolled at Juniata College and completed his work for an A.B. degree in three years. Later he was awarded his M.A. degree at University of Pennsylvania.

After leaving Woodbury he assumed principalship at Replogle High School, and in recent years became a teacher and resident of New Jersey, living at Morrestown with his wife, the former Kathryn Bolger of Woodbury.



Last Principal of
Woodbury High School
1931-1957

Harry T. Snavely

HARRY T. SNAVELY, was principal of Woodbury High School at the time of the jointure of the Northern Bedford County School Districts. He attended Millersville State Teachers' College, graduated from Lebanon Valley, and had taught four terms at Lebanon prior to assuming his duties at Woodbury as Science and Social Studies teacher in 1931. He later received his M. Ed. at Penn State.

See page 35 for others who served as teaching-principals of Woodbury High School.

High School History

The history of the public schools in Woodbury Borough dates back to near the middle of the 19th century.

The first school building, the present Grange Hall, was erected in 1869 and housed the local pupils in both primary and grammar school classes for nearly a half-century.

Nine one-room school houses built in the adjoining township brought educational opportunities to those separate communities, and later served as "feeder schools" to the local high school. They were: Hickory Bottom, Pine Grove, Paradise, Shady Grove, Pleasant Hill, Replogle, Oak Grove, Dry Hill, and Mt. Joy.

The need for public education beyond the grade schools became very evident and a movement began for establishment of a local high school.

The first step was taken in 1915, when Claude K. Snider, grade school principal, was asked by the Board of Directors to include in his duties the extra responsibility of teaching the required subjects for first-year high school students. His salary was set at \$85.00 per month by Board members: S. S. Stonerook, W. A. Schooley, J. C. Nicodemus, Hiram Felton, and G. B. Hoover. The non-resident students admitted that September were: Wilmer Longenecker, Robert Miller, Verna Clouse, Maude Gephart, Margaret Bayer, Harris Holsinger, Frank Noble and Effie Grace.

The following year the two adjoining rooms on the first floor were renovated, with four grades in each, for the Primary and Grammar school children. The second-floor room was occupied by high school students, under the supervision of the newly elected principal, Blair B. Bechtel. His monthly salary was \$75.00. Tuition for each pupil amounted to \$4.54 per month for a seven-month term. The tax rate was nine mills and the yearly operating costs for the high school were reported to be \$762.90.

Meeting the requirements of a three-year high school by attending a summer session, the first class of seven girls and two boys were graduated in the spring of 1917.

Four years later, the first move toward a jointure of borough and township schools occurred at a special meeting of the Directors. On January 11, resolutions were drawn up to establish, equip, furnish, and maintain a Joint Consolidated School, the cost of which should be paid by the respective districts. A special election was held in February.

Records from the secretary's book show no further developments on the proposal. Students from out-lying areas continued paying tuition to the Borough for the three-year high school course. Those who wished to advance, enrolled for the fourth year at Roaring Spring High School and Morrison's Cove at Martinsburg.

The teacher's salary was increased to \$80.00 per month, with the requirement to teach every day except Christmas. By the fall of 1929, when an assistant was named, the salary was \$150.00 for a nine-month term.

On February 4, 1929, after an eight-year delay, the matter of consolidation with the township was discussed and unanimously agreed upon by the Borough directors. Results from that decision led to the formation of the Woodbury Joint Consolidated Public School District, comprised of both township and borough.

A special meeting of the group was called on April 24, to act on a contract for a new building. Construction and furnishing materials was under the supervision of Architects Hunter & Caldwell, at a cost of \$16,873.00. The bid submitted for the electric work was \$552.79, and cost of heating and ventilation, \$2,308.32. The following directors were present: John Mock, H. J. Miller, Alvin Bechtel, E. B. Miller, David Johnson, L. R. Weber, C. H. Sell, J. N. Byers, J. W. Carper, and A. M. Smith.

In agreement, the Board stated that all costs and expenses of the new building would be divided between the school districts on the basis that 84% be borne by the township and 16%, the borough. All salaries, maintenance, and operation would be divided proportionately on the basis of annual enrollment from each district, the grades separately from the high school. The township would bear all the transportation expense, since the borough had no pupils to be hauled. A contract was made with Philip C. Kensinger, who owned and operated the three buses that carried the pupils from outlying areas. The monthly contract price was in the neighborhood of \$257.80 in 1935.

Professor Raymond R. Baugher, high school principal in the Borough building, assumed the same duties in the new Consolidated School. The General Course was offered to the students. Assisting on the faculty at that time were William McMahon, instructor in science and mathematics, and Viola Kephart, English and Latin.

At a special meeting on April 13, 1936, the Borough School Board agreed to sell the old building and grounds to the Woodbury Grange for the sum of \$500.00. Present to make that decision were Directors C. H. Sell, H. E. Hoffman, J. W. Carper, J. H. Smith, and I. C. Stayer. The building for many years had been used for the local high school plays, the proceeds of which were used to defray the cost of the annual class trips.

In the early 1940's, an annex was added to the Consolidated building, containing a specially equipped room for shop training and one for a home economics department. This opened the way for freshmen and other upper classmen to pursue courses in general shop instruction and homemaking.

A few years later, through the efforts of the local Parent-Teachers' Association, a school lunch program was initiated under the supervision of Anna C. Snavelly.

The school continued operating for a number of years without any anticipated changes until 1951. The State Department of Public Instruction had been advocating larger school districts from an economical standpoint and that better educational programs could be offered. With this in view, the Woodbury Board decided to look into the advantages of a possible merger with a neighboring district. Meeting numerous times with representatives from South Woodbury Township and those from Morrison's Cove area, created in decision and disagreement.

After a six-year delay, the Woodbury Joint Board met in special session on May 29, 1957. From this the following resolutions resulted: "Be it resolved that the members of the Woodbury Joint School Board have determined by majority vote to join the proposed school jointure, consisting of a part of Broad Top, Hopewell Borough and Township, South Woodbury Township, Woodbury Borough and Township and Bloomfield Township, and, if necessary, dissolve the said Woodbury Joint School Board to accomplish its purpose". Directors in attendance were: President, Willis Long, William Helsel, Donald Over, Harry Forshey, Emmert Pepple, Jacob Miller, Chester Erb, and Jesse Imler, Secretary.

With this jointure, Woodbury School became a part of Northern Bedford County School District. The Joint Consolidated Building has since been utilized by the six elementary grades.

The number of graduates from Woodbury High School totaled exactly 400 in the 40 years the school was in existence.

The publication of "The History" occurred on the 50th anniversary year of the new consolidated school at Woodbury, built in 1929.

From the Annual Report of
the Superintendent of Public Schools,
Bedford County, 1930

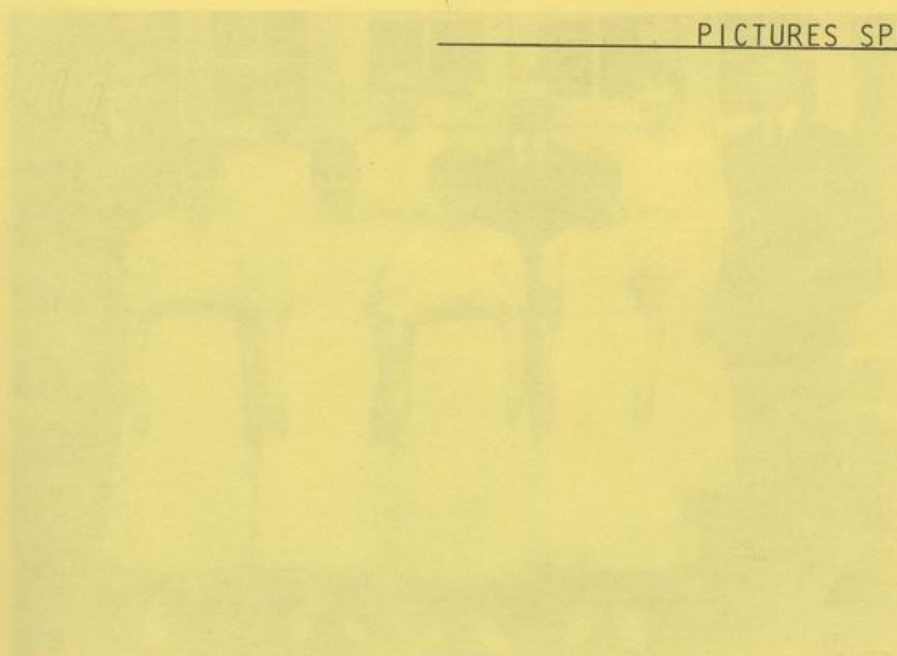
Woodbury Borough and Woodbury Township after a struggle for a number of years finally succeeded in establishing a joint consolidated school. The two boards erected a fine school building just outside of Woodbury which accommodates all the pupils of the two districts. The boys and girls now have the advantages of a graded school and a four year high school.

On Saturday, January 18, 1930, the new building was dedicated. There was a large gathering of citizens and pupils at both the morning and afternoon meetings. The speakers on this occasion were Dr. Lee L. Driver, Department of Public Instruction; T. S. Davis, County Superintendent of Blair County; M. A. Dively, Superintendent of Logan Township; Attorney S. H. Sell, of Bedford; Prof. J. W. Rumberger, of Roaring Spring; Prof. John Ake, of New Enterprise; Edward Carper, Postmaster at Roaring Spring; County Superintendent Lloyd H. Hinkle and Assistant County Superintendent H. D. Metzger. It was a gala day in the educational history of these two districts.

In 1942, the high school students participated in a national scrap drive. Six groups, working in the sections in which they lived, collected 20 tons of iron, 1,300 pounds of rubber, and 584 pounds of rags. Contributors were paid in war stamps amounting to \$140.00. The balance of \$13.68 was added to the school fund.

FIRST CLASS TO GRADUATE - 1917

PICTURES SPEAK



Top row, left to right: Gertrude Stayer, Kathryn Selger, Ethel Burns, Helen Wilson.

Bottom row, left to right: Harvey Maguire, Miss Grace, Edna Stayer, Gladys Selger, Teacher, Alma Selger, Howard Selger.

FIRST CLASS TO GRADUATE - 1917



Front row, left to right: Gertrude Stayer, Kathryn Bolger, Ethel Burns, Verna Clouse.

Back row, left to right: Harvey Kagarise, Effie Grace, Rena Stayer, Blair Bechtel, teacher, Alma Keiper, Howard Keiper.

HIGH SCHOOL STUDENTS WHO LAST ATTENDED THE BOROUGH BUILDING



WOODBURY HIGH SCHOOL - 1929: Row 1, left to right: Prof. Raymond R. Baugher,* Mae Imler, Evelyn Replogle, Olive Koontz, Della Frederick, Alice Mickel, Lillian Baker, Miss Martha Webb, teacher. Row 2: Kathryn Logue, Margie Pepple, Mary Ott, Marian Imler. Row 3: Ira Amick, Wilma Furry, Glenna Johnson, Arvilla Frederick, Gerald Replogle. Row 4: Irvin Guyer, John Lockart, Arthur Detwiler, Margaret McAlevy. Row 5: Kenneth Longenecker, Ross Bechtel, Darleigh Replogle, John Longenecker. Row 6: Harry Stauffer, Frank Nicodemus, Charles Foreman.

*Raymond R. Baugher, taught three years in the Borough and was the first principal at the Joint Consolidated School at Woodbury. A native of York County, he is an alumnus of Elizabethtown College. Later he acquired his Masters and Doctorate from Columbia University.

FIRST GRADUATES FROM THE CONSOLIDATED SCHOOL



THE CLASS OF 1930, the first to graduate from the new Consolidated School at Woodbury. The two girls were Rosie Frederick, left, and Grace Logue. The boys, left to right, were: Irvin Guyer, Frank Nicodemus, Kenneth Longenecker, Charles Foreman, Harry Stauffer.

LAST CLASS TO GRADUATE-1957



WOODBURY HIGH SCHOOL CLASS OF 1957, the last to graduate before the Jointure with Northern Bedford County. Seated, left to right, with their Principal are: Beverly Miller, Ruth Mock, Janice Helsel, Mr. Snavely, Shelby Wright, Lydia Imler, Carol Jean Stonerook. Standing: DeAnna Hollinger, Marjorie Pepple, David Lee Zimmerman, John Ferry, Edwin Sell, Ray Reighard, Geraldine Bassler, Carol McCall, Deanna Butler.

James Woodbury, Charles Foreman.

THE WOODBURY SCHOOL, WOODBURY, N.J. 1922-23
 HIGH SCHOOL STUDENTS OF 1922-23



WOODBURY HIGH SCHOOL STUDENT BODY OF 1922-23 - Row 1, left to right:
 Harold Stonerook, Dulce Moore, Cyrus Over, Robert Burns, Oliver Frederick.
 Row 2: Prof. Allman, Laverne Bechtel, Sara Replogle, Dessa Over, Larue
 Hoover, Helen Coy. Row 3: Bertha Kagarise, Mae Miller, Mary Bassler,
 Mary Claar, Alice Imler, Alrue Dively, Mae Smith, Nannie Corle. Row 4:
 John Replogle, Clara Kagarise, John Brown, Elizabeth Ebersole, Ruth
 Fockler, Chester Moore, Anna Stayer.

PUPILS AND STUDENTS WHO ATTENDED THE BOROUGH SCHOOL IN 1924-25

1924-25 SEP 17 1925



WOODBURY BOROUGH SCHOOL, September 1924 - Row 1: (reclining) John Bassler, William DeArmit, Bud Decker, Harry Decker, William Cooper, Glenn Sell. Row 2: (sitting) Martin and Gerald Replogle, James Carper, Harry Stauffer, Glenn Nicodemus, Robert Longenecker, Charles Foreman, Frank Stayer, Darleigh Replogle, Frank Bechtel, Robert Replogle. Row 3: Ivan Bechtel, Robert Kagarise, Emmert Pepple, Donald Over, Harold Nicodemus, Donald Wolfe, Jesse Imler, Mark Stauffer, Frank Stonerook, Aldy Wolfe, C. Kauffman, Charles Brown. Row 4: Dora Lamborn, Sonny and Ruth Stockslager, Elmira Lamborn, Margaret Claar, Harold Stonerook, Mabel Claar, Mahlon Over, Etta Mae Walters, Bertha Cooper, Gladys Kissel, Della Frederick, Evelyn Replogle, Melvin Long. Row 5: Prof. Allman, Pauline Keiper, Mae Miller, Mary Bassler, Laverne Bechtel, Mae Smith, Dorothy Johnson, Sara Pepple, Martha Imler, Maria Corle, Anna Stayer, Barbara Smith, Evelyn McMahon, Mary Keiper. Row 6: Thelma Rowland, Bernard Brown, Mary Sell, John Miller, Florence Clouse, John Replogle, Dorothy Over, Frank Nicodemus, Amanda Byers, Anona Kissel, Marjorie Pepple.

THE FIRST SCHOOL BUSSES



THREE REO BUSES, owned and operated by Philip C. Kensinger, were used to transport pupils to the newly consolidated school at Woodbury in 1929.

Extract
from the minutes of--

Woodbury Borough School District of Bedford County

October 20, 1879

Special meeting of the Board. Members present: William Simpson, A. S. Beckhoefer, F. B. Berkhimer, S. W. Burns, D. Bulger, and D. F. Keagy. The Board passed the following Resolutions:

Resolved, That each and every scholar attending the schools in this district must show obedience to the teachers, be punctual and prompt in attendance at the schools, and all bad conduct such as swearing, fighting, etc., is strictly prohibited.

Resolved, That each scholar on the way to and from the school is under the teacher's care and any misconduct is strictly prohibited.

Resolved, That running about at night and neglecting to study their lessons or tasks given by the teachers will not be permitted and the parents or guardians of children are asked to see that these resolutions are respected.

Resolved, That the teachers are requested in case of non-obedience to the foregoing rules to notify the parents and guardians thereof, and if no attention is given, to notify the Board of Directors and if the complaints are found sufficient such scholars will be dismissed from the school.

Resolved, That the practice of locking out the teacher near about or during the holidays is considered very much out of place and will not be tolerated by the Board of Directors, and any scholar attempting to do so will be dismissed from school, and in case of any disturbance, it will be brought to the notice of the Court of Bedford County.

Resolved, That a copy of these resolutions be furnished to each of the teachers in the District and the teachers be requested to read them to their respective schools once every month in the morning after taking up school, so that ignorance cannot be pled as an excuse.

Resolved, That any damage done by scholars to the school building or its appurtenances must be repaired by the person doing such damage or suit will be brought for malicious mischief.

D. F. Keagy,
Secretary

SUMMER NORMAL, 1917



Mark Bulger, Gertrude Stayer, Nason Hoffman and Alma Keiper show signs of Spring Fever, or they are cramming for exams as they sit on the steps of the "old building" in 1917.

SUMMER NORMAL, 1915



SUMMER SCHOOL held at Woodbury in 1915 - Seated, left to right: Leon Kettering, Canning Imler, Gertrude Stayer, Ethel Burns. Row 2: Nason Hoffman, Ida Stayer, Alma Keiper, Eva Replogle, Mark Bulger, Wilbur Longenecker, Verna Clouse. Row 3: Howard Keiper, Mabel Haffly, Roy Sell, Claude Snider, teacher, Harry Miller, Clara Haffly, Mabel Stayer, Ralph Felton.

Woodbury became an educational center and through its summer normals and examinations conducted by the County Superintendent, many teachers were trained and licensed to teach in grade schools. Teachers also assisted with the school in the early 1900's were Lewis Croft and Hartley Replogle.

HIGH SCHOOL AND SCHOOL-COMMUNITY ACTIVITIES

F.F.A. and F.H.A.

Woodbury High School, one of the smallest secondary schools in the county, had active V.-A. and F.F.A. and F.H.A. ACTIVITIES

Organized in 1940, the F.F.A. Chapter obtained the first achievement at the Northern Bedford County Fair as first prize winner on a booth exhibit on ideal arrangement of farm tools.

As chapter projects the A.G. boys planted three acres of loblolly for the S. J. Weiss Company and purchased forest seeds from Soil Conservation Service, planting them for a minimal charge for the farmers.

F.F.A. gained distinction in 1950 of having two members win the coveted American Farmer degree at the same time. Again, Donald Kunkler and Ralph Ivory. Likewise, Ag. student Robert Fessenden brought honors to his class in the Union of Teachers Contest, when he placed first out of 25 counties and second in the entire state. His prize-winner butter sold for \$3.50 per pound.

For outstanding cooperation in V.F.A. activities in Fair-Bedford-Palmer County area, the Pennsylvania Association of Future Farmers of America bestowed the Honorary American Farmer degree on Agriculture teacher, William Brubaker.

Under his capable leadership, top honors were achieved in both state and county V.-A. farm program evaluation in 1957. The Chapter won three silver medals in state and a total of 19 in the area contests.

The F.H.A., organized about the same time, was as active in the field of home economics as were the boys in agriculture.

School lunches were prepared and served by the girls three days each week. Exhibits at the Woodbury Farm Show and the Northern Bedford County Fair won many honors. A display at the State Fair Show in Harrisburg won the F.H.A. title.

High School and School-Community

Under the guidance of Miss Adelle Buechert, Woodbury girls were well represented at the Regional Conventions at West-12 and Pittsburgh, and Pennsylvania F.H.A. Convention at Gettysburg.

The Future Farmers and Future Homemakers, representative of two of the largest professions, encouraged democracy in the home, on the farm and in the community.

HIGH SCHOOL AND SCHOOL-COMMUNITY ACTIVITIES

F.F.A. and F.H.A.

Woodbury High School, one of the smallest secondary schools in Bedford County, had active Vo-Ag and Home Economics departments.

Chartered in 1940, the F.F.A. Chapter obtained its first achievement at the Northern Bedford County Fair as first prize winner on a booth exhibit, an ideal arrangement of farm tools.

As chapter projects the Ag. boys planted three acres of tomatoes for the H. J. Heinz Company and purchased forest trees from Soil Conservation Service, planting them for a minimal charge for the farmers.

W.H.S. gained distinction in 1950 of having two members win the coveted Keystone Farmer degree at the same time; namely, Donald Kensinger and Ralph Ferry. Likewise, Ag. student Robert Pressel brought honors to his club in the Chicken of Tomorrow Contest, when he placed first out of 22 counties and second in the entire state. His prize-winner broiler sold for \$3.60 per pound.

For outstanding cooperation in F.F.A. activities in Blair-Bedford-Fulton County area, the Pennsylvania Association of Future Farmers of America bestowed the Honorary Keystone Farmer degree on Agriculture teacher, William McMahon.

Under his capable leadership, top honors were achieved in both state and area Vo-Ag farm program evaluation in 1957. The Chapter won five silver awards in state and a total of 19 in the area contests.

The F.H.A., organized about the same time, was as active in the field of home economics as were the boys in agriculture.

School lunches were prepared and served by the club three days each week. Exhibits at the Woodbury Farm Show and the Northern Bedford County Fair won first-place honors. A display at the State Farm Show in Harrisburg was a challenge to the F.H.A. girls.

Under the guidance of Miss Adele Boothroyd, Woodbury girls were well represented at the Regional Conventions at Bedford and Pittsburgh, and Pennsylvania F.H.A. Convention at Scranton.

The Future Farmers and Future Homemakers, representative of two of the largest professions, encouraged democracy in the home, on the farm and in the community.

Activities - continued

The Mixed Chorus

The Woodbury High School Mixed Chorus, formed in 1948, trained its members in group singing and proved an opportunity for development of outstanding musical talent.

Under the efficient direction of Berger C. Baker, assisted by pianist Viola K. Stonerook, the 30-member group presented an annual Spring Musical before a very responsive audience. Fourteen of its members participated in the annual Bedford County Music Festival in 1950, held at Bedford. Local appearances included P.T.A. and school assembly programs, the Farm Products Show and the Sunday School Convention. Three of the group - Phyllis Corle, Jean Replogle and Jay Guyer - were representatives at the Pennsylvania District Chorus Festival held at Punxsutawney in 1951.

Climaxing the choral and scholastic work of the school year, and continuing the long-established tradition, the Mixed Chorus sang for both the annual Baccalaureate and Commencement exercises.

The Farm Show

The Farm Products Show was held in the Fall of 1933, the first exhibit of its kind in the area.

Handmade quilts and rugs, canned goods and baked items were displayed in various rooms of the school building. The judge in this division was Ella Sorrick, teacher of Home Economics at Morrisons Cove Vocational School.

Area farmers brought portions of their best crops. Judging these exhibits was Blair County Agent, E. G. Hammil. Refreshments were provided by the school. Log sawing and nail driving contests were scheduled with afternoon activities. A capacity crowd filled the assembly hall, both afternoon and evening, to hear the especially prepared program.

The first show being an overwhelming success, brought a challenge to area farmers and homemakers to extend the exhibition over a two-day period each season.

Activities - continued

The "Pioneer"

The earliest issue of the school newspaper, The Pioneer, appeared in 1930.

The monthly publication was produced with a staff of editor-in-chief and two associates, a manager in the business, advertising and circulation departments, and their assistants, and a sports editor. Two reporters from each of the four classes were responsible for class activities, club news and special events. The 10-14 page paper was mimeographed and sold for the subscription price of five cents per issue.

Listed with exchange publications of other schools were: "Mountain Echoe", Altoona High; "Smith Hi-Life", Smith Vocational; "R. S. H. S. Whirlwind", Roaring Spring; "Cove Hi Aerial"; "Hill Top Echo", Replogle; and "Cherwyte", Martinsburg.

The advertising manager was busy in his department with ads of local businessmen. Contributors were: Phil Kensinger, whose loads of coal were larger and lower in price, and his plane trips were a treat; S. B. Fluke, reductions in all jewelry and watches; Barkman's Service Station, lunch and refreshments, and 100% pure Quaker State oil, and Woodbury Milling Co., manufacturer of Blue Ribbon Flour and Flavo Feeds. Complimentary ads were received from M. Q. Baker, a member of Better Stores, Inc.; C. G. Bechtel General Store; Miller's Garage who had Willy's Knight Agency; E. S. Stonerook, barber; E. K. Witter, proprietor of Highway Inn; I. C. Stayer Stationery Store; Hobe Smith Garage, J. N. Byers, and Farmer's State Bank.

The class of 1935 made the first venture of the students of W.H.S. in publishing a yearbook. That year the number of issues of The Pioneer were lessened to three so that the annual could be edited, the only one in the Cove at that time. Each class continued the annual publication until the merger of the school with Northern Bedford County School District in 1957. The high school class of 1958 joined the three schools in the first publication of "Tri-Hi-Life".

Class Mottos: "Striving For The Goal" - '41
"Victory Is Ours Forever" - '42
"Forward Ever, Backward Never" - '45
"We're On Our Way" - '46
"Here Endeth, Here Beginneth" - '47

"The Values of Being an American"

By Jesse L. Clouse

"Many people living today do not realize what a privilege they have in being an American citizen. They don't realize that America's vastness, its richness and its power is acknowledged world wide, and also that it is one of the oldest Republics in the world.

Considerable credit should be given to our early immigrants and the founders of our country. Many people of exceptional character and intelligence were driven to America from Europe by civil or religious persecution at home. The greater number came by a desire to better their condition, not for religious purposes, but nevertheless they gave a touch of idealism to the American character, which it has never lost.

Our religion is purely a private matter, while our education is principally a public matter. School children of today are getting many more opportunities since the school methods are constantly improving.

Because of the richness of our country the people of America have never had any need for want.

One of the greatest things we should be proud of is the improvements in transportation and commerce.

The values of being an American are of so great a number that we, the American people, should be proud and thankful that we live in a country so vast, so rich and so powerful."

From the 1947 "Pioneer"

The P. T. A.

The Literary Society continued through the high school years, evolving into the Parent-Teacher Association. Interesting monthly programs, with individual classes in charge, produced entertainment for the entire community.

The first Parent-Teacher Association Meeting was held on October 14, 1930. The evening's entertainment opened with a selection by the Woodbury Orchestra, under the direction of Loren Longenecker. Rev. E. F. Sipe, Pastor of the Church of God, spoke on "Cooperation", stressing the importance of the influence of the home and the church upon the school. At the close of the literary program a pie social and auction took place. Twenty-five pies were sold and the proceeds received by the Athletic Association. The seniors sold wiener sandwiches, hot coffee and candy during the evening.

Commemorating the first anniversary of the new school building, an invitation was extended to former teachers and pupils to attend the Homecoming program. The Association planned to serve a hot chicken and waffle dinner in the building - the cost, 32 cents. Bus transportation was provided over the regular bus routes.

At one meeting an "old fashioned" spelling bee was conducted to determine the champion speller who would compete in the final county elimination contest at Bedford, March 19, 1934. These contests were held all over the counties for the Centennial Celebration of the passing of the Free School Act in Pennsylvania. Only adults were eligible, no teachers or college students, to join in "choosing up sides". Both sides were spelled down three times. Mrs. Alva Bechtel became the champion and George H. Miller was a close second. The State contest was in April.

The Association was a supporting factor to many school projects. A new piano was purchased for school use, and through its efforts a school lunch program had its beginning in the newly supplied cafeteria.

Open discussions on various subjects regarding entertainment, sports, and extra-curricular activities brought about a compatible relationship among parents, faculty and the students.

COMMUNITY CENTER



Attesting to the school's recognition as a community center, a natural stone monument, honoring those who served in the Armed Forces during World War II, was erected at the front of the high school. Contributions from local citizens enabled the Snyder Brothers of Loysburg to complete the project.

Students, left to right, clockwise, Mike Ritchey, Nada Fletcher, June Hinish, Arlene Musselman, Peggy Lou Snyder, Doris Pressel, and Elwood Stitt.

The Literary Society

The Literary Society was a great contributing factor to the community life and early educational development in the Woodbury area.

Governed by a regular slate of officers, the meetings were held bi-weekly during the winter months from November to March.

The Society presented opportunities for experience in public speaking and oratory, dialog and drama. They instructed in cyphering and spelling, contests, and current events. Music, both instrumental and vocal, was a part of every program. Inter high school debates were promoted in the county, under the direction of Professor Lloyd H. Hinkle, County Superintendent. Figuring prominently on the traveling team were: Howard Keiper, Frank Noble, Harris Holsinger, Hazel Bolger, Faye Croft, and Robert Miller, alternate.

All of this display of ability seemed to have its beginning in the early school system. The organization included adult members of the community as well as the school children. It was basically the social function of importance during the winter months and eventually gave way to the P.T.A. and other high school activities.

An excerpt, taken at random from the minute book of the secretary, November 14, 1919, follows, which reproduces a typical session of the Society:

Music - "America"
Recitation - LaRue Hoover
Pantomime - Primary School
Duet - Margaret Over, Elizabeth Snyder
Debate: "Resolved, That the township and borough
schools ought to be consolidated."
Affirmative - Gertrude Brown, LaRue Hoover
Negative - Verna Kauffman, Wilma Keiper
Solo
Dialogue - John Brown, Pauline Simpson
Recitation - Mark Keagy
Music by school
Current events - Ora Replogle
Duet - Pauline Keiper, Romaine Bolger
Collection - \$1.05
Adjournment

Many questions chosen for debate were of a more serious nature and proved a challenge to the teams, often ending in a general discussion of the subject. Included in this group were: "One gains more knowledge by

travel than by books"; "Women should not have the right of suffrage"; "A high school course is more valuable than a college course"; "Immigration should further be restricted by law", and "Man is influenced more by heredity than environment".

The selection of subjects changed, however, during 1916. Centering on a militant nature, the following were questionable: "Should military tactics be taught in public schools"; "United States is benefited by selling ammunition to the allies"; "Liquor causes more misery than war", and "Military training should be compulsory in the U.S."

Several programs listed subjects of a lighter context, bringing humor into the entertainment. These were: "A clean cross woman is preferable to a dirty good-natured woman"; "A horse is more useful than an automobile"; and "Girls are more expensive than boys".

Our school is few, as members go;
But greater is our spirit.
We strive for just the best to know;
And try our goal to near it.

So that's why this paper we sent out,
To show our spirit true;
And though it worthless be, no doubt,
We hope it pleases you.

- The Pioneer

Class of 1925

Virginia Amick

Samuel Johnson

Charles Brown

Betty Jones

Robert Frederick

Irvin Miller

Lola Goyer

Lola Kephole

Aush Harnierode

Wyle Hall, Jr.

Class of 1927

Blissom Beach

Earl Jones

Victor Davis

Samuel Geyer

Anna Dilling

Clayd Shriver

Mary Anna Goyer

Class of 1928

Jacob Carper

Olson Russell

Charles Diehl, Jr.

Clara Kephole

Thelma Keith

Syren Snyder

Class of 1929

Minnie Mae Amick

Deslen Miller

John Barrett

Henry Pepple

Mary Kathryn Beach

Earl Belghard

Lola Madine Beach

Samuel Russell

Evelyn Reichtel

Harry Shoop

Robert Dilling

Marlin Snyder

William Jones

ATHLETICS

Class of 1936

Virginia Amick

Charles Brown

Robert Frederick

Lois Guyer

Ruth Harclerode

Samuel Johnson

Betty Jones

Irvin Miller

Lois Replogle

Clyde Sell, Jr.

Class of 1937

Blossom Beach

Victor Davis

Anna Dilling

Mary Emma Guyer

Hazel Logue

Kenneth Over

Cloyd Shriner

Class of 1938

Jacob Carper

Charles Diehl, Jr.

Romaine Keith

Glenn Russell

Clara Replogle

Byron Snyder

Class of 1939

Minnie Mae Amick

John Barrett

Mary Kathryn Beach

Lois Nadine Beach

Evelyn Bechtel

Robert Dilling

William Jones

Evelyn Miller

Henry Pepple

Earl Reighard

Kenneth Russell

Harry Shoop

Marie Snyder

Class of 1940

Elizabeth Brumbaugh

Elvin Carper

Leonard Johnson

Gladys Logue

Robert Logue

Clair Miller

Eleanor Miller

Harry Miller

Kathryn Morgan

Lois Stonerook

Class of 1941

Lois Baker

David Ebersole

LaRue Hollinger

Ray Lamborn

Donald Logue

Marjorie Miller

Richard Russell

Ida Settlemeier

Mary Shoop

Anna Snyder

George Wareham

Romaine Whetstone

Class of 1942

Stanley Carper

George Clouse

Josephine Foor

Dessa Henry

Donald Imler

Paul Lehman

Betty Obenour

Howard Over

Paul Replogle

Dorothy Snyder

Class of 1943

Gerald Beach

Delmar Cooper

Dean Frederick

Walter Logue

James Morgan

Alton Over

John Over

Betty Pressel

Grace Stonerook

Betty Wareham

Ruth Whetstone

Class of 1944

Lois Brumbaugh
Clyde Byers
Betty Forshey
Robert Miller
Richard Over
Earl Rodland

Thelma Russell
Reid Shaffer
Elvin Smith
Ruth Snyder
Olive Whitacre

Class of 1945

James Beach
David Beach
Betty Carper
Lucille Clouse
Raymond Hinish, Jr.
Allene Kensinger

William Logue
Nancy Musselman
Joseph Over
Phyllis Ritchey
Jennie Roudabush

Class of 1946

Charles Beach
Dean Brumbuagh
Anna Bulger
Eloise Clouse
Jack Clouse
Ruth Ebersole
Robert Guyer
Audrey Hinish
Donald Huntsman

Franklin Huntsman
Levi Imler
Lloyd Imler
Maynard Over
Vivian Ritchey
Betty Roudabush
Donald Russell
Dorothy Russell
Betty Whetstone

Class of 1950

Clara Dohrn
Ralph Ferry
Nada Fletcher
Kenneth Gable, Jr.
Shirley Helsel
June Hinish

Ruth Huntsman
Arlene Musselman
Doris Pressel
Esther Shriner
Peggy Lou Snyder
Olive Weyandt

Class of 1951

Lois Corle
Phyllis Corle
Donald Kensinger
Donald Pepple
Dorothy Pepple

Jean Replogle
Martha Roudabush
Mary Roudabush
Harold Russell
Jesse Shriner

Class of 1952

Patricia Armour
Richard Carper
Kenton Frederick
Nellie Frederick
Rosemary Gable
Doretta Hollinger
Vera Huntsman

Eugene Miller
Spencer Miller
Evelyn Sell
Christine Snavelly
Donna Snyder
Patricia Teeter
Homer Walter

Class of 1953

Daniel Albright
Robert Beach
Robert Corle
Daniel Imler
Lois Miller

Albert Mock
Shirley Roudabush
Lloyd Russell
Helen Stapleton
Shirley Stonerook

Class of 1954

Jane Bassler
Dwayne Boor
Louise Carper
Betty Belle Clouse
Alan Ferry
Jay Guyer
William Helsel
Robert Kensinger
Glenn Miller

Larry Miller
Robert Pressel
Nancy Reighard
Dorothy Replogle
Paul Ritchey, Jr.
Homer Shriner
Betty Stonerook
Benny Swope
Betty Fern Wright

Class of 1955

Bernie Baker
Shirley Boor
Peggy Carper
Dorothy Clouse
John Gable
Joyce Helsel

Doris Imler
Shirley Mountain
Della Nave
Ralph Replogle
Herman Ritchey
Barbara Snyder

Class of 1956

William Gable

Vada Imler

Robert Russell

Robert Showalter

Mary Shriner

Class of 1957

Geraldine Bassler

Deanna Butler

John Ferry

Janice Helsel

DeAnna Hollinger

Lydia Imler

Carol McCall

Beverly Miller

Ruth Mock

Marjorie Pepple

Ray Reighard

Edwin Sell

Carol Jean Stonerook

Shelby Wright

David Lee Zimmerman

SCHOOL DIRECTORS 1915-1957

Woodbury Borough

1915

S. S. Stonerook, Woodbury
J. C. Nicodemus, Woodbury
Hiram Felton, Woodbury
*C. B. Hetrick, Woodbury
W. A. Schooley, Woodbury

1917

W. A. Schooley, Woodbury
Hiram Felton, Woodbury
*Lloyd B. Stayer, Woodbury
J. C. Nicodemus, Woodbury
G. B. Hoover, Woodbury
Jacob N. Byers, Woodbury

1919

J. C. Nicodemus, Woodbury
Hiram Felton, Woodbury
Lloyd B. Stayer, Woodbury
G. B. Hoover, Woodbury
J. N. Byers, Woodbury

1921

J. N. Byers, Woodbury
Hiram Felton, Woodbury
Frank Henry, Woodbury
G. B. Hoover, Woodbury
Dr. I. C. Stayer, Woodbury
Madison Henry, Woodbury

1923

W. A. Schooley, Woodbury
Hiram Felton, Woodbury
*Frank Henry, Woodbury
G. B. Hoover, Woodbury
J. N. Byers, Woodbury

1925

C. H. Sell, Woodbury
L. R. Weber, Woodbury
Frank Henry, Woodbury
J. N. Byers, Woodbury
George B. Hoover, Woodbury

1916

W. A. Schooley, Woodbury
Hiram Felton, Woodbury
*C. B. Hetrick, Woodbury
J. C. Nicodemus, Woodbury
George B. Hoover, Woodbury
Jacob N. Byers, Woodbury

1918

J. C. Nicodemus, Woodbury
Hiram Felton, Woodbury
L. B. Stayer, Woodbury
G. B. Hoover, Woodbury
J. N. Byers, Woodbury

1920

J. N. Byers, Woodbury
Hiram Felton, Woodbury
Lloyd B. Stayer, Woodbury
G. B. Hoover, Woodbury
Madison Henry, Woodbury

1922

W. A. Schooley, Woodbury
Hiram Felton, Woodbury
*Frank Henry, Woodbury
G. B. Hoover, Woodbury
Aaron Bechtel, Woodbury
Madison Henry, Woodbury

1924

Cyrus H. Sell, Woodbury
Frannie S. Stayer, Woodbury
Frank Henry, Woodbury
George Hoover, Woodbury
J. N. Byers, Woodbury
T. R. Weber, Woodbury

1926

C. H. Sell, Woodbury
L. R. Weber, Woodbury
Frank Henry, Woodbury
J. N. Byers, Woodbury
G. B. Hoover, Woodbury

* Non member (treasurer or secretary)

Woodbury Borough

1927

C. H. Sell, Woodbury
L. R. Weber, Woodbury
*D. I. Pepple, Woodbury
J. N. Byers, Woodbury
Frank Henry, Woodbury
G. B. Hoover, Woodbury

1928

C. H. Sell, Woodbury
L. R. Weber, Woodbury
D. I. Pepple, Woodbury
J. N. Byers, Woodbury
J. W. Carper, Woodbury
A. M. Smith, Woodbury

Woodbury Borough

1929

C. H. Sell, Woodbury
J. W. Carper, Woodbury
*D. I. Pepple, Woodbury
J. N. Byers, Woodbury
L. R. Weber, Woodbury
A. M. Smith, Woodbury

1930

J. N. Byers, Woodbury
J. W. Carper, Woodbury
*D. I. Pepple, Woodbury
A. M. Smith, Woodbury
L. R. Weber, Woodbury
George W. Clouse, Woodbury

1931

J. N. Byers, Woodbury
J. W. Carper, Woodbury
*D. I. Pepple, Woodbury
L. R. Weber, Woodbury
A. M. Smith, Woodbury
George W. Clouse, Woodbury

1932

A. M. Smith, Woodbury
J. W. Carper, Woodbury
*D. I. Pepple, Woodbury
Earl Hoffman, Woodbury
George W. Clouse, Woodbury
Dr. I. C. Stayer, Woodbury

Woodbury Township

1929

Harry I. Miller, Woodbury
John R. Mock, Curryville
David S. Johnson, Woodbury
Alvan Bechtel, Woodbury
Elmer Miller, Henrietta

1930

Elmer B. Miller, Henrietta
John R. Mock, Curryville
Harry I. Miller, Woodbury
D. S. Johnson, Woodbury
Joseph C. Corle, Henrietta

1931

David S. Johnson, Woodbury
John R. Mock, Curryville
Elmer B. Miller, Henrietta
Harry I. Miller, Woodbury
J. C. Corle, Henrietta

1932

C. H. Detwiler, Woodbury
John R. Mock, Curryville
J. C. Corle, Henrietta
D. S. Johnson, Woodbury
W. H. Russell, Woodbury

1933

Earl Hoffman, Woodbury
J. W. Carper, Woodbury
*D. I. Pepple, Woodbury
Dr. I. C. Stayer, Woodbury
George W. Clouse, Woodbury
A. M. Smith, Woodbury

1934

Earl Hoffman, Woodbury
J. W. Carper, Woodbury
*D. I. Pepple, Woodbury
George W. Clouse, Woodbury
Hobart Smith, Woodbury
Dr. I. C. Stayer, Woodbury

1935

H. E. Hoffman, Woodbury
J. W. Carper, Woodbury
Dr. I. C. Stayer, Woodbury
George W. Clouse, Woodbury
Hobart Smith, Woodbury

1936

C. H. Sell, Woodbury
J. W. Carper, Woodbury
Dr. I. C. Stayer, Woodbury
H. E. Hoffman, Woodbury
J. H. Smith, Woodbury

1937

C. H. Sell, Woodbury
J. W. Carper, Woodbury
J. H. Smith, Woodbury
Dr. I. C. Stayer, Woodbury
H. E. Hoffman, Woodbury

1938

C. H. Sell, Woodbury
J. W. Carper, Woodbury
J. H. Smith, Woodbury
Clyde Boyer, Woodbury

1933

C. H. Detwiler, Woodbury
W. H. Russell, Woodbury
J. C. Corle, Martinsburg
D. S. Johnson, Woodbury
John R. Mock, Curryville

1934

Clarence Detwiler, Woodbury
W. H. Russell, Woodbury
Franklin Beach, Woodbury
J. C. Corle, Martinsburg
Clyde Sell, Martinsburg

1935

J. Clyde Sell, Woodbury
W. H. Russell, Woodbury
Clarence H. Detwiler, Woodbury
J. C. Corle, Woodbury
J. Franklin Beach, Woodbury

1936

Clyde Sell, Woodbury
W. H. Russell, Woodbury
C. H. Detwiler, Woodbury
Frank Huntsman, Woodbury
Franklin Beach, Woodbury

1937

Frank Huntsman, Woodbury
J. F. Beach, Woodbury
Clyde Sell, Woodbury
W. H. Russell, Woodbury
C. H. Detwiler, Woodbury

1938

W. F. T. Huntsman, New Enterprise
J. F. Beach, Woodbury
J. Clyde Sell, Martinsburg
D. F. Bassler, Woodbury
Cyrus S. Over, Roaring Spring

1939

C. H. Sell, Woodbury
J. W. Carper, Woodbury
Clyde Boyer, Woodbury
J. H. Smith, Woodbury

1940

Cyrus Sell, Woodbury
Emmert Pepple, Woodbury
Clyde Boyer, Woodbury
Earl Stonerook, Woodbury
J. N. Smith, Woodbury

1941

C. H. Sell, Woodbury
W. E. Pepple, Woodbury
C. E. Boyer, Woodbury
J. N. Smith, Woodbury
Earl S. Stonerook, Woodbury

1942

Cyrus H. Sell, Woodbury
Emmert Pepple, Woodbury
Clyde E. Boyer, Woodbury
Earl S. Stonerook, Woodbury
J. N. Smith, Woodbury

1943

C. H. Sell, Woodbury
W. E. Pepple, Woodbury
C. E. Boyer, Woodbury
Earl S. Stonerook, Woodbury
J. N. Smith, Woodbury

1944

C. H. Sell, Woodbury
W. E. Pepple, Woodbury
C. E. Boyer, Woodbury
Earl S. Stonerook, Woodbury
J. N. Smith, Woodbury

1945

C. H. Sell, Woodbury
W. E. Pepple, Woodbury
C. E. Boyer, Woodbury
Earl S. Stonerook, Woodbury
Hubert Zimmerman, Woodbury

1939

D. F. Bassler, Woodbury
J. F. Beach, Woodbury
Frank T. Huntsman, Woodbury
J. Clyde Sell, Martinsburg
Cyrus S. Over, Roaring Spring

1940

Cyrus Over, Woodbury
*Franklin Beach, Woodbury
Frank Huntsman, Woodbury
Paul B. Stayer, Woodbury
Clyde Sell, Woodbury
Clarence Detwiler, Woodbury

1941

C. H. Detwiler, Woodbury
Cyrus S. Over, Roaring Spring
Paul B. Stayer, Woodbury
J. Clyde Sell, Martinsburg
Frank T. Huntsman, Woodbury

1942

Clarence H. Detwiler, Woodbury
Cyrus S. Over, Roaring Spring
Paul B. Stayer, Woodbury
J. Clyde Sell, Martinsburg
Frank T. Huntsman, Woodbury

1943

Clarence H. Detwiler, Woodbury
Cyrus S. Over, Roaring Spring
Paul S. Stayer, Woodbury
J. Clyde Sell, Martinsburg
Frank T. Huntsman, Woodbury

1944

Paul B. Stayer, Woodbury
Cyrus S. Over, Roaring Spring
J. Cyrus Sell, Martinsburg
Frank T. Huntsman, Woodbury
Alda R. Logue, Woodbury

1945

Paul B. Stayer, Woodbury
Cyrus S. Over, Roaring Spring
Frank T. Huntsman, Woodbury
Alda R. Logue, Woodbury
J. Clyde Sell, Martinsburg

1946

C. H. Sell, Woodbury
W. E. Pepple, Woodbury
C. E. Boyer, Woodbury
Earl S. Stonerook, Woodbury
Hubert Zimmerman, Woodbury

1947

C. H. Sell, Woodbury
W. D. Pepple, Woodbury
C. E. Boyer, Woodbury
Earl S. Stonerook, Woodbury
Hubert Zimmerman, Woodbury

1948

C. H. Sell, Woodbury
W. E. Pepple, Woodbury
Earl S. Stonerook, Woodbury
L. C. Barkman, Woodbury
Hubert Zimmerman, Woodbury

1949

C. H. Sell, Woodbury
W. E. Pepple, Woodbury
Earl S. Stonerook, Woodbury
L. C. Barkman, Woodbury
Hubert Zimmerman, Woodbury

1950

C. H. Sell, Woodbury
W. E. Pepple, Woodbury
Earl S. Stonerook, Woodbury
L. C. Barkman, Woodbury
Jesse W. Imler, Woodbury

1951

C. H. Sell, Woodbury
W. E. Pepple, Woodbury
Earl S. Stonerook, Woodbury
L. C. Barkman, Woodbury
Jesse W. Imler, Woodbury

1952

C. H. Sell, Woodbury
W. E. Pepple, Woodbury
Earl Stonerook, Woodbury
L. C. Barkman, Woodbury
Jesse W. Imler, Woodbury

1946

Alda R. Logue, Woodbury
Kenneth Shaffer, Woodbury
Frank T. Huntsman, Woodbury
Simon Carper, Roaring Spring
Cyrus S. Over, Roaring Spring

1947

Simon Carper, Roaring Spring
Kenneth Shaffer, Woodbury
Frank T. Huntsman, Woodbury
Alda R. Logue, Woodbury
Cyrus S. Over, Roaring Spring

1948

Simon Carper, Roaring Spring, R.D.
Arthur D. Kensinger, Woodbury, R.D.
Alda R. Logue, Woodbury, R.D.
Clarence H. Detwiler, Roaring Spring
Cyrus S. Over, Roaring Spring, R.D.

1949

Simon Carper, Roaring Spring, R.D.
Arthur Kensinger, Woodbury, R.D.
Alda R. Logue, Woodbury, R.D.
Clarence H. Detwiler, Roaring Spring
Cyrus Over, Roaring Spring, R.D.

1950

Clarence H. Detwiler, Roaring Spring
Arthur Kensinger, Woodbury
Simon Carper, Roaring Spring, R.D.
Harry Forshey, Martinsburg, R.D.
John Smith, Woodbury, R. D.

1951

Clarence H. Detwiler, Roaring Spring
Arthur D. Densinger, Woodbury
Simon Carper, Roaring Spring
Harry Forshey, Martinsburg, R.D.
John Smith, Woodbury, R.D.

1952

Simon Carper, Roaring Spring, R. D.
Arthur D. Kensinger, Woodbury
Harry Forshey, Martinsburg
Donald Over, Roaring Spring, R.D.
John Smith, Woodbury, R.D.

1953

L. C. Barkman, Woodbury
W. E. Pepple, Woodbury
Earl Stonerock, Woodbury
Jesse W. Imler, Woodbury
Jacob C. Miller, Woodbury

1954

L. C. Barkman, Woodbury
W. E. Pepple, Woodbury
Earl Stonerock, Woodbury
Jesse W. Imler, Woodbury
Jacob C. Miller, Woodbury

1955

L. C. Barkman, Woodbury
W. E. Pepple, Woodbury
Earl Stonerock, Woodbury
Jesse W. Imler, Woodbury
Jacob C. Miller, Woodbury

1956

Jacob C. Miller, Woodbury
W. E. Pepple, Woodbury
Jesse W. Imler, Woodbury
Willis L. Long, Woodbury
Harry Forshey, Woodbury

1957

Jacob C. Miller, Woodbury
W. E. Pepple, Woodbury
Harry Forshey, Woodbury
Willis L. Long, Woodbury
Jesse W. Imler, Woodbury

1953

Donald Over, Roaring Spring R.D.
Arthur D. Kensinger, Woodbury
Harry Forshey, Martinsburg
Simon Carper, Roaring Spring, R.D.
John Smith, Woodbury, R.D.

1954

Donald Over, Roaring Spring
Arthur D. Kensinger, Woodbury
Simon Carper, Roaring Spring
Elwood Hollinger, Martinsburg
John Smith, Woodbury, R.D.

1955

Elwood Hollinger, Martinsburg
Arthur D. Kensinger, Woodbury
Simon Carper, Roaring Spring R.D.
Donald Over, Roaring Spring, R.D.
John Smith, Woodbury, R.D.

1956

Donald Over, Roaring Spring, R.D.
Arthur D. Kensinger, Woodbury
Simon Carper, Roaring Spring
Chester Erb, Roaring Spring
William Helsel, Woodbury

1957

Donald Over, Roaring Spring, R.D.
Chester Erb, Roaring Spring, R.D.
Simon Carper, Roaring Spring, R.D.
William Helsel, Woodbury
Arthur D. Kensinger, Woodbury

In Conclusion

We wish to express our indebtedness to those who supplied valuable assistance, photographs and information in preparation for the completed history of Woodbury High School.

The Committee

Copies of this booklet may be obtained at cost of production from the Woodbury High School Alumni, c/o Office of the Superintendent, Northern Bedford County School District, Loysburg, Pennsylvania 16659.